

WHITE CUBE

Sara Flores
13 December 2023 – 13 January 2024
White Cube Paris

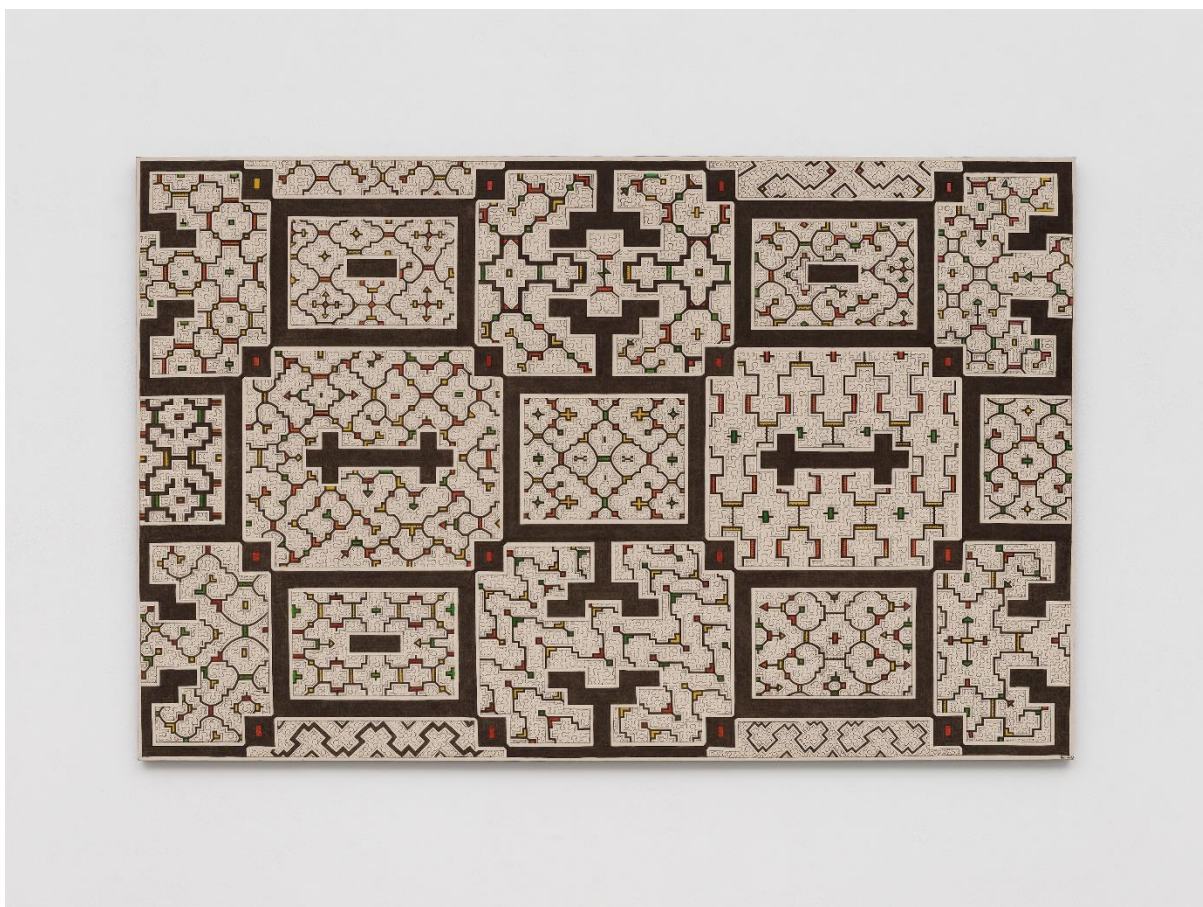
Press Images



Sara Flores
Untitled (Shao Maya Kené, 2022)
2022
Vegetal dyes on wild-cotton canvas
143 x 132.8 cm | 56 5/16 x 52 5/16 in.
© the artist. Photo © White Cube (Theo Christelis)

WHITE CUBE

Sara Flores
13 December 2023 – 13 January 2024
White Cube Paris



Sara Flores
Untitled (Shao Maya Punté Kené 1, 2021)
2021
Vegetal dyes on wild-cotton canvas
142.24 x 221.2 cm | 56 x 87 1/16 in.
© the artist. Photo © White Cube (Ollie Hammick)

WHITE CUBE

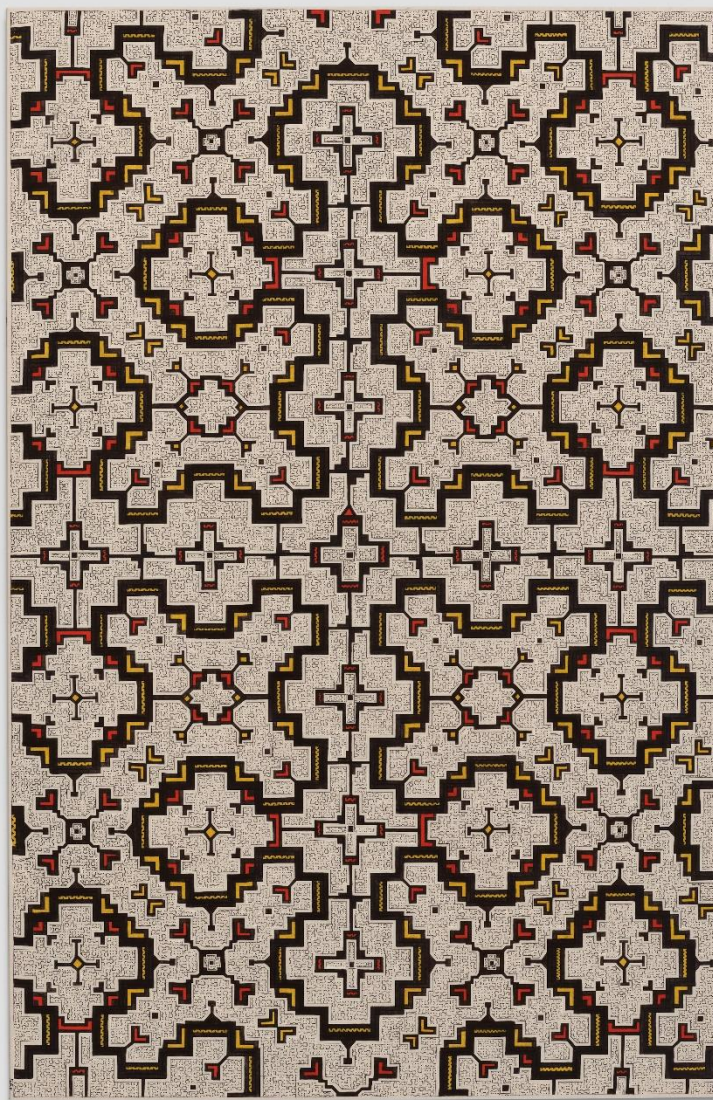
Sara Flores
13 December 2023 – 13 January 2024
White Cube Paris



Sara Flores
Untitled (Punte Kené, 2021)
2021
Vegetal dyes on wild-cotton canvas
141.5 x 138.3 cm | 55 11/16 x 54 7/16 in.
© the artist. Photo © White Cube (Theo Christelis)

WHITE CUBE

Sara Flores
13 December 2023 – 13 January 2024
White Cube Paris

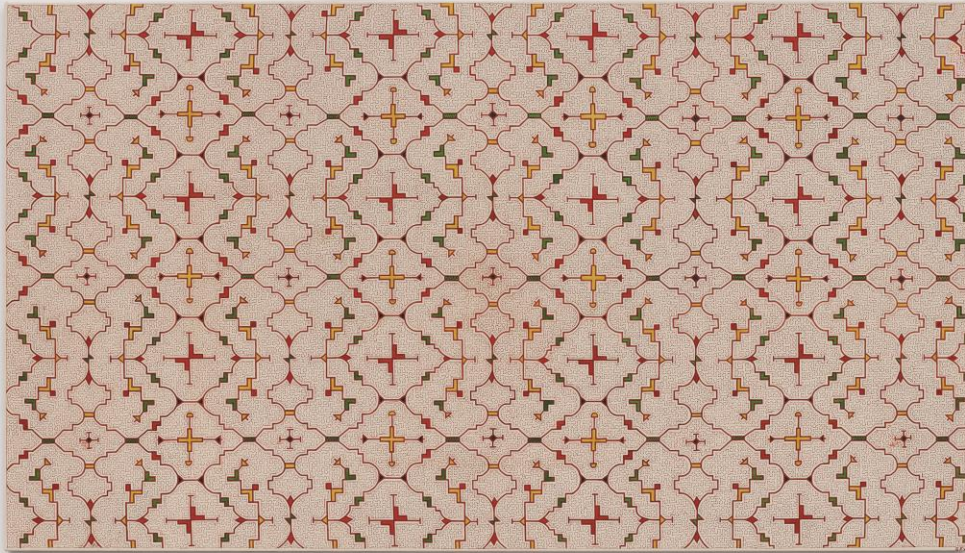


Sara Flores
Untitled (Tayan Kené 1, 2023)
2023

Vegetal dyes on wild-cotton canvas
212.6 x 138.1 cm | 83 11/16 x 54 3/8 in.
© the artist. Photo © White Cube (Ollie Hammick)

WHITE CUBE

Sara Flores
13 December 2023 – 13 January 2024
White Cube Paris



Sara Flores
Untitled (Maya Kené 15, 2023)
2023
Vegetal dyes on wild-cotton canvas
131.1 x 230.3 cm | 51 5/8 x 90 11/16 in.
© the artist. Photo © White Cube (Ollie Hammick)

W H I T E C U B E

Sara Flores
13 December 2023 – 13 January 2024
White Cube Paris



Sara Flores
Untitled (Wirish Kené 1, 2017)
2017

Vegetal dyes on wild-cotton canvas
147 x 179 cm | 57 7/8 x 70 1/2 in.

© the artist. Photo © White Cube (David Westwood)

Sara Flores
13 December 2023 – 13 January 2024
White Cube Paris

Receipt of the images implies acceptance of these Terms and Conditions.

All authorised uses of images must be accompanied by the copyright notice and credit provided. Unless otherwise agreed by us or the artist, all copyright in the work and images shall remain with us (or the photographer) and/or the artist as appropriate and you acknowledge that you have no right or interest in or to the work or images other than that specifically granted by us below and may not forward the images to third parties.

Unless otherwise agreed, images must not be altered, edited or overlaid with text. Notwithstanding the foregoing, any colour chart provided is for reference only and must be cropped out of the image before publication.

Images are for one time use only and must not be stored for future use.

Two copies of the printed publication must be sent to White Cube.